



EVEN FASTER. AMAZINGLY VIBRANT COLORS. THE RICHEST BLACKS.

Support for virtually all widely used OKI printers available today. Including entry-level, professional level Pro-Series printers as well as label printers. Digital Factory v10 OKI Edition RIP software provides an unmatched pre-production and print workflow feature set alongside complete color management tools that include industry-leading, automated white toner handling.



Your Cadlink Dealer:
Specialty Graphics Supply Inc.
www.Specialty-Graphics.com
(888) 330-6172



CADlink
TECHNOLOGY CORPORATION
Making your machines run better.

LEADING EDGE COLOR MANAGEMENT AND PRODUCTION WORKFLOW TECHNOLOGY



DOWNLOAD A FREE FULLY FUNCTIONAL TRIAL VERSION AT CADLINK.COM

ADVANCED COLOR MANAGEMENT AND PRINT QUALITY

OUTSTANDING RICH, VIBRANT, COLOR-ACCURATE PRINTING

Pre-configured, variable "No Ink" production queues included for fabric printing. Makes better, softer "feel" of graphics on the garment. Improves color fastness without an impact on quality of the printed image. Also provides exceptional print cost savings with optimized toner usage

Optimized screening. Precision printing provides the sharpest image details factory-created color profiles included for an assortment of transfer media and substrates. Print vivid colors on a variety of substrates both textile and non-textile

Variable "no ink" patterns available to maximize graphics quality and toner savings

EFFICIENT AND INTUITIVE PRODUCTION WORKFLOW TOOLS

Complete visual job management display including access to multiple queues using an easy access tab system.

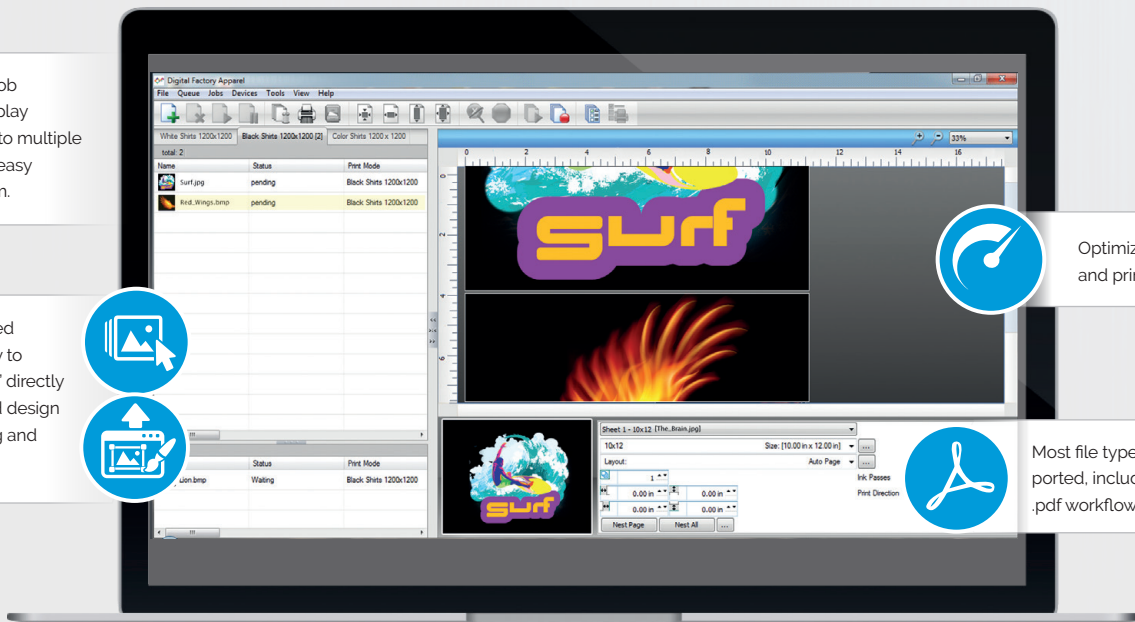
Jobs can be added quickly and easily to queues; "send-to" directly from widely-used design applications, drag and drop, or import



Optimized RIP and print speeds



Most file types are supported, including seamless .pdf workflow support.



Your Cadlink Dealer:
Specialty Graphics Supply Inc.
www.Specialty-Graphics.com
(888) 330-6172

DIGITAL FACTORY OKI EDITION VS. SOME OTHER EXISTING SOFTWARE OPTIONS



**INCREASE PRODUCTION
EFFICIENCY, DECREASE CHANCE
OF PRODUCTION ERRORS.**

Digital Factory OKI Edition includes automated, preset queues. Other products require that each and every job be setup and configured separately which increases production set up time and also leads to potential errors that waste time and materials. Pre-set queues ensure that proper settings are maintained for all jobs.



MULTI LANGUAGE SUPPORT.

All major languages supported.



**PRINT THE MOST
VIBRANT COLORS ON...**

T-shirts (white, colored, and black) • mugs •
coasters • ceramic tiles • cups • bag tags
sports bottles • dishware promotional items
wood • glass • aluminium • mouse pads
custom packaging • beer cozies •
as well as hard surfaces and specialty
substrates of virtually any type



**INTERACTIVE GRAPHIC
LAYOUT TOOLS.**



Scale, position designs on print area directly within the RIP. Not available in many other color management RIP software or driver-based printing solutions.



**MORE TRANSFER
MEDIA OPTIONS.**

Don't be tied into limited transfer paper selections. Color profiles for most widely-used transfer papers including (Forever™, Shockline, CL TrimFree™, and many others possible)



DIGITAL FACTORY OKI™ EDITION FEATURES:

GENERAL RIP FEATURES

- Windows™ 10, 8 and 7 support (32 & 64 bit)
- Optimized RIP processing speeds
- Start to finish .pdf workflow support
- Send jobs directly to queues from design applications (PhotoShop™, Corel™, Illustrator™)
- RIP once, print many
- Preset color profiles for white, black, and colored fabrics and other substrates
- Templates support for exact positioning of graphics
- "KnockMeBlackOut", black and grey color removal
- "KnockMeColorOut", white and other color removal
- Transparency Opacity
- Send job with underbase directly from design applications
- Automatic trapping in queues
- High Speed printmodes with no quality reduction
- Multiple brands of transfer media supported (incl. Forever™, CL TrimFree™)
- NEW | Lightning fast 64-bit architecture
- NEW | Optimized multiple job processing (RIP threading)
- NEW | Simplified navigation; Easy queue menu tabs, page view and job properties
- NEW | Grid option in job preview window
- NEW | Instant access to job information using "mouse-over image"
- NEW | Automated TCP/IP port search for easier network printing setup
- NEW | Quick job reprints with save job backup (.jbk file) option
- NEW | Export queues and printer packages

- NEW | Worldwide language support using Unicode
- NEW | 4K Display Support

COLOR MANAGEMENT TOOLS

- High fidelity, ICC compliant color management engine (ColorLogic)
- Simple ink volume controls
- Complete manual color curve controls by image detail (shadows, mid-tones, highlights)
- Advanced color correction tools interface
- NEW | Easy color adjustments
- NEW | Color adjustment wizard for merging ICC rendering intents
- NEW | Easy-access to printmodes and printmode overrides

PRE-PRODUCTION TOOLS

- Visual print preview
- Raw data preview
- Multi-copy with spacing controls (In-Queue feature)
- Cropping controls of image and job (In-Queue feature)
- Rotation controls of image and job (In-Queue feature)
- Mirror, invert image and job (In-Queue feature)
- Scale image and job to any size (In-Queue feature)
- Soft proofing
- No-ink' option that applies rasterized customizable pattern options (holes, stripes) to graphics. Reduces toner consumption, improves color fastness and softens final print on garment.

- NEW | "No-ink" patterns automatically adjust size of no-ink areas based on image transparency. Greatly improves image quality
- NEW | Built-in special effects/filters (distressed, distressed frames, sharpen)
- NEW | Updated Supersize filter functionality for improved image resolution
- NEW | Job color replacement
- NEW | Simple application of choke to white underbase
- NEW | Export template layouts with improved template user interface
- NEW | Image duplication interface

JOB MANAGEMENT AND SCHEDULING TOOLS

- Unique, single window visual interface, one central easy to manage hub for all jobs
- Easy to use queue set-up wizard. Set up production queues quickly and easily
- Auto-scheduling or manual scheduling of jobs
- On-the-fly job prioritization using simple drag and drop
- Job archiving, history, print status and job log
- Job notes
- Hot folder support
- Gmail support. Send jobs directly to queues using mobile devices via Gmail
- NEW | Bar code support for automated production
- NEW | Enhanced plug-ins for Corel, Illustrator and Photoshop that send print jobs directly to production queues with automated white underbase created. No cumbersome job preparation required.
- NEW | High volume production options available (RIP Server + Multiple machine support, added cost applied)

CADLINK FAMILY OF SOFTWARE PRODUCTS

Discover the benefits of using a single source for all your design and production requirements



www.cadlink.com

Digital Factory is a registered trademark of CADlink Technology Corporation.

All other trademarks are a property of their respective owners.

TWO PACKAGES AVAILABLE:
Each includes the same powerful features.

DIGITAL FACTORY V10 OKI EDITION:
Supports the following printers: C3xx Series, C6xx, C7xx, C8xx Series, C843 Series, C8432WT, Pro 7411WT, Pro 9420WT

DIGITAL FACTORY V10 OKI PRO EDITION:
Supports the following printers: C3xx Series, C6xx, C7xx, C8xx Series, C843 Series, C8432WT, Pro 7411WT, Pro 9420WT, C911, C931, C941, C942, Pro 9431 Series, Pro 9541 Series, Pro 9542 Series, Pro 9541WT, Pro 1040/1050

COMPATIBLE WITH:



SYSTEM REQUIREMENTS:

CPU Intel i5-i7 2.6-3.0GHz

Storage 500 SSD (recommended) or HDD

RAM 8-12GB

Your Cadlink Dealer: Specialty Graphics Supply Inc. www.Specialty-Graphics.com